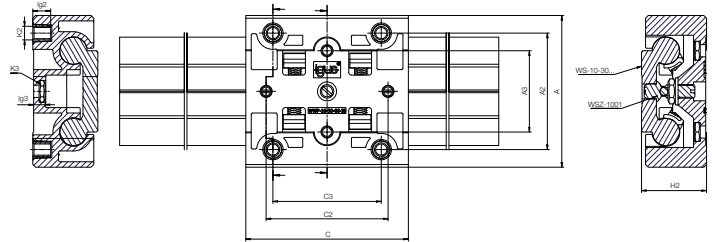
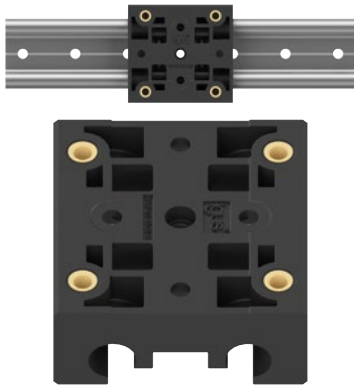


drylin® econ polymer linear carriage

Solid plastic monobloc



Light and cost-effective

The first solid-plastic carriage for the compact installation size 1030 of the drylin® W linear system. Extremely simple installation thanks to the monoblock shape. The choice is yours:

Easy handling - monobloc

Defined displacement force - pre-loaded monoblock

Defined stopping points - monoblock with locking ball

- Quickly mountable linear carriage due to monoblock design
- Cost-effective injection moulding
- 80% weight saving compared to aluminium linear carriages (WW-10-30: 0.24kg; WWP: 0.043kg)
- 100% lubrication-free due to iglidur® JB

Product range

Part No.	A	C	A2	C2	A3	C3	K2	K3	lg2	lg3	H2
	[mm]	[mm]	[mm]	[mm]	[mm]	[mm]	[mm]	Hexagon nut DIN 439	[mm]	[mm]	[mm]
WWP-10-30-06-□	56	60	43	40	30	45	M5	M4	6.6	4.2	24
WWPV-10-30-06-□	56	60	43	40	30	45	M5	M4	6.6	4.2	24

Part No.	Pre-load
	[N]
WWPV-10-30-06-P160	16
WWPV-10-30-06-P360	36
WWPV-10-30-06-P560	56

Design:

Blank: Standard carriage

-P□: With pre-load

-P□-LM: Locking mechanism (stop motion) with pre-load and spring thrust washer

Screw elements:

Blank: Without screw elements

A: With brass thread inserts

B: With hexagon nut

Carriage material:

JB: iglidur® JB

i8: iglidur® i8

Order example: WWPV-10-30-06-P160-LM-A-i8: spring-loaded solid plastic carriage made of iglidur® i8 with spring thrust washer and brass thread inserts, 16N pre-load