
igus® data sheet

ReBeL® RL-SE

Fully integrated strain wave gear



General properties

- Fully integrated individual gearbox with motor, control system and encoder
- Output with encoder and mounting flange
- Brushless DC motor (external rotor)
- CAN-BUS motor driver board
- 25% lighter than conventional strain wave gears due to igus® high-performance polymers
 - Application temperature: +5°C to +40°C
 - Lubrication-free
 - Cost-effective
 - Durable

Contents

General properties	Page 02
Shaft gearboxes installation size 80	Page 03
RL-SE-80-50-0000 version with motor encoder and without brake	
RL-SE-80-50-0010 version with output encoder and without brake	
Shaft gearboxes installation size 105	Page 05
RL-SE-105-50-0000 version with motor encoder and without brake	
RL-SE-105-50-0010 version with output encoder and without brake	
RL-SE-105-50-0100 version with motor encoder and brake	
RL-SE-105-50-0110 version with output encoder and brake	

ReBeL[®] fully integrated strain wave gear installation size 80

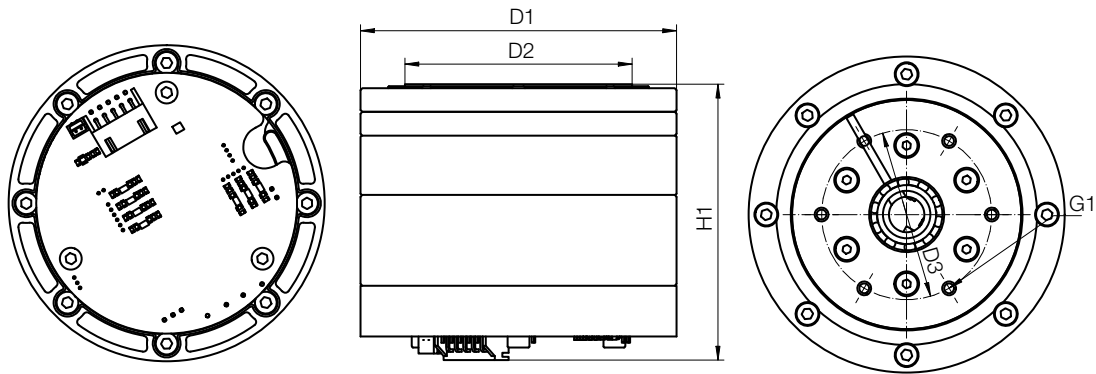


... available transmission ratios

	Unit	
Weight	g	330.0
Max. output torque	Nm	2.5
Rated torque	Nm	2.0
Output speed	rpm	6.0
Transmission		50:1
Mechanical service life	Cycles/min.	1,000,000
Backlash (output)		>1°

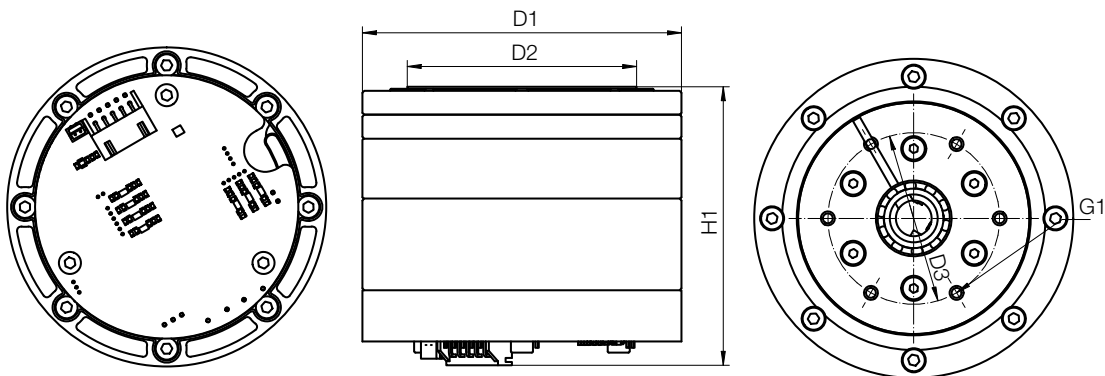
Dimensions

RL-SE-80-50-0000 with motor encoder and without brake



Part number	D1	D2	D3	D4	H1	G1	G2
RL-SE-80-50-0000	80	57.5	43	71	58.8	M3	M3

RL-SE-80-50-0010 with output encoder and without brake



Part number	D1	D2	D3	D4	H1	G1	G2
RL-SE-80-50-0010	80	57.5	43	71	58.8	M3	M3

ReBeL® fully integrated strain wave gear installation size 105

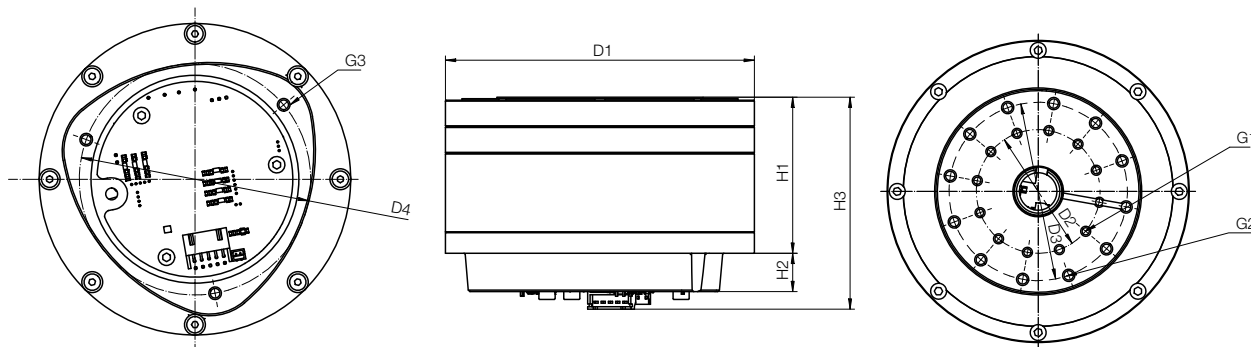


... available transmission ratios

	Unit	
Weight	g	900.0
Max. output torque	Nm	20.0
Rated torque	Nm	15.0
Output speed	rpm	6.0
Transmission		50:1
Mechanical service life	Cycles/min.	1,000,000
Backlash (output)		>1°

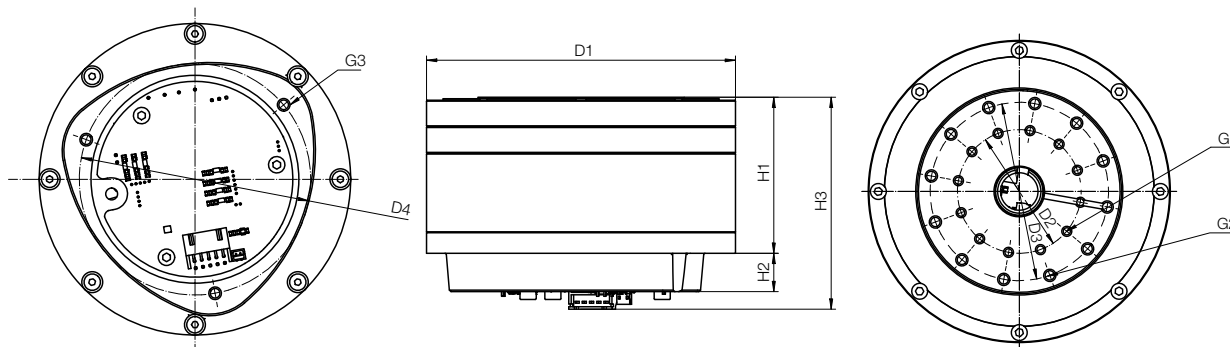
Dimensions

RL-SE-105-50-0000 with motor encoder and without brake



Part number	D1	D2	D3	D4	H1	H2	H3	G1	G2	G3
RL-SE-105-50-0000	105	43	62	78	53	13	72	M3	M4	M4

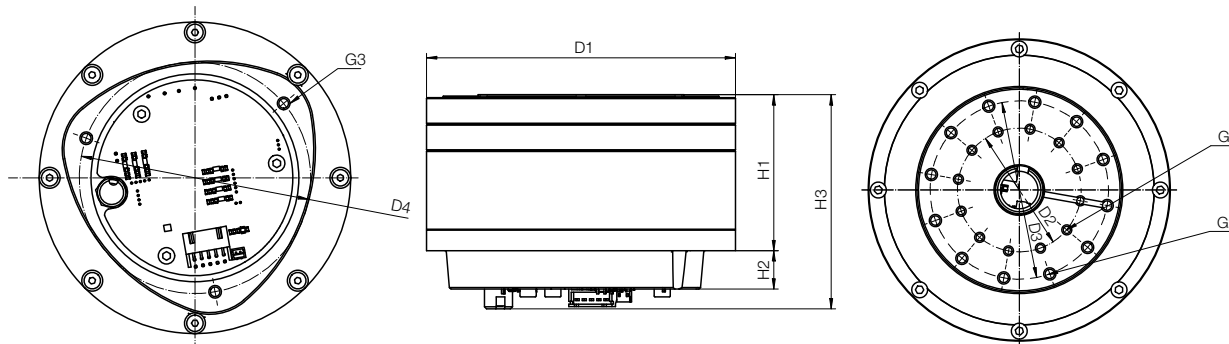
RL-SE-105-50-0010 with drive encoder and without brake



Part number	D1	D2	D3	D4	H1	H2	H3	G1	G2	G3
RL-SE-105-50-0010	105	43	62	78	53	13	72	M3	M4	M4

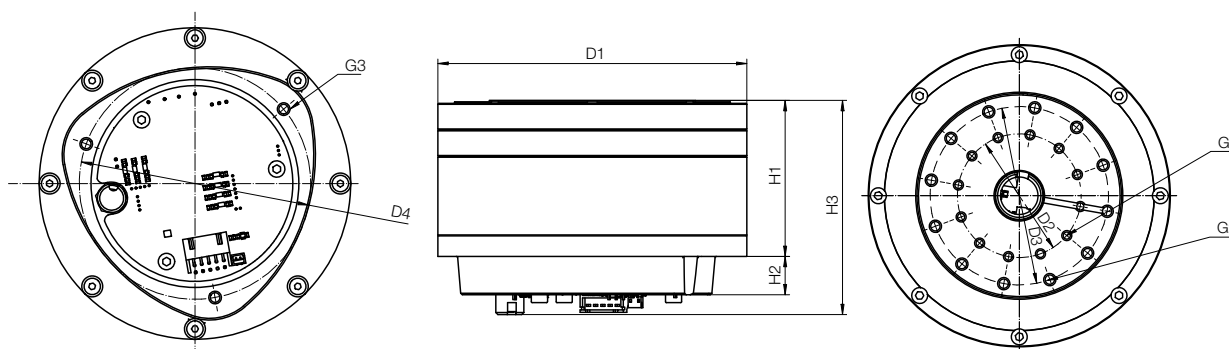
Dimensions

RL-SE-105-50-0100 with motor encoder and brake



Part number	D1	D2	D3	D4	H1	H2	H3	G1	G2	G3
RL-SE-105-50-0100	105	43	62	78	53	13	72	M3	M4	M4

RL-SE-105-50-0110 with drive encoder and brake



Part number	D1	D2	D3	D4	H1	H2	H3	G1	G2	G3
RL-SE-105-50-0110	105	43	62	78	53	13	72	M3	M4	M4

Accessories

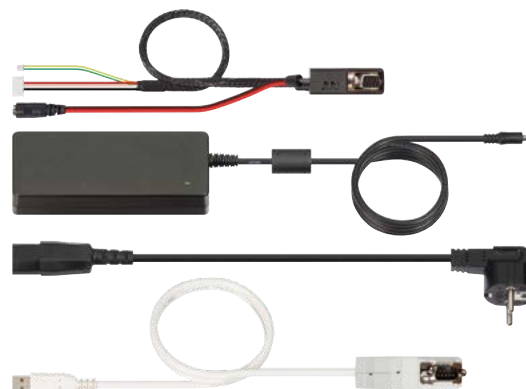
Complete package (part number RL-SE-EC-0118)

- Peak PCAN-USB adapter
- Adapter cable*
- 24V power supply unit including power cord

Communications package (part number RL-SE-EC-0117)

- Peak PCAN-USB adapter
- Adapter cable*

You can find further information on the motor controller here:



* The adapter cable connects the power supply unit with the PCAN adapter and the ReBeL[®] axis. It generates 5V logic voltage for one axis via an integrated DCDC converter. A CAN terminating resistor is integrated.