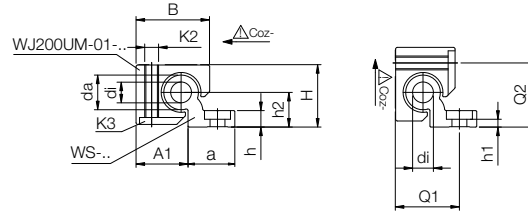
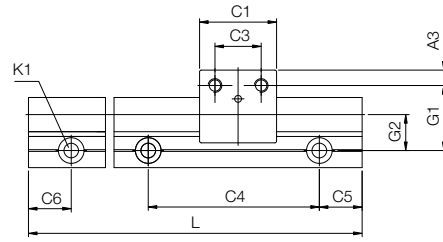


Torsion-resistant single rails drylin® W linear system



Robust linear rails

Individual rails for variable distances and installation positions.

- More robust hard-anodisation or cost-effective clear anodisation in silver (CA)
- Can be delivered with millimetre precision up to 3,000m
- High surface moments of inertia, double rail, $I_y 8,234\text{mm}^4$, $I_z 1,171\text{mm}^4$
- Best mating partner for lubrication-free drylin® W linear plain bearings

Product range

Part No.	Weight	H	da	di	L	a	A1	h	h1	h2	G1	G2	Q1	Q2
		±0.25	-0.1		max.									
	[kg/m]	[mm]	[mm]	[mm]	[mm]	[mm]	[mm]	[mm]	[mm]	[mm]	[mm]	[mm]	[mm]	[mm]
WS-06	0.234	14	6	-	3,000	14	13	4	4.5*	7.5	18	4.5	17	15

*Plain holes

Part No.	C4		C5		C6		K1 for screw	Geometrical moment of inertia		Moment of resistance	
	min.	max.	min.	max.	min.	max.		I_y	I_z	Wby	Wbz
	[mm]	[mm]	[mm]	[mm]	[mm]	[mm]	DIN 912	[mm ⁴]	[mm ⁴]	[mm ³]	[mm ³]
WS-06	60	20	49.5	20	49.5		M4	2,500	660	250	100