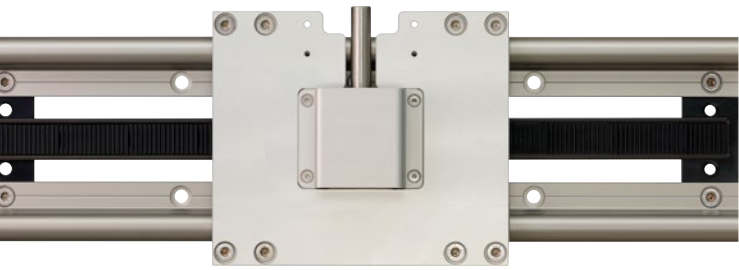


# ... an endlessly expandable drive ... almost ...

On a long rail profile, several carriages can be controlled in parallel but independently of each other. Travels can also be easily extended at a later date thanks to the rack and pinion segments.

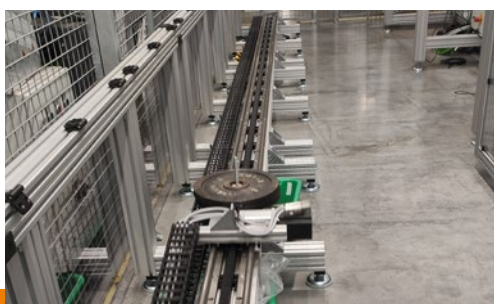


### ▲ Tech up

- Rack and pinion elements modularly (endlessly) expandable
- For applications > 2,000mm
- For movements with high dynamics
- Separate operation of several linear carriages possible at the same time
- Prepared for connecting drylin® electric motors

### ■ Proof

- Load 200N, speed 1m/s, normal temperature, total stroke length 15,000mm/cycle, tested for 45,000 cycles

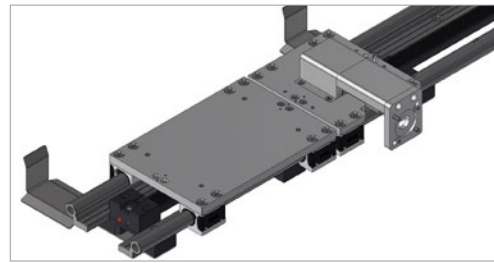
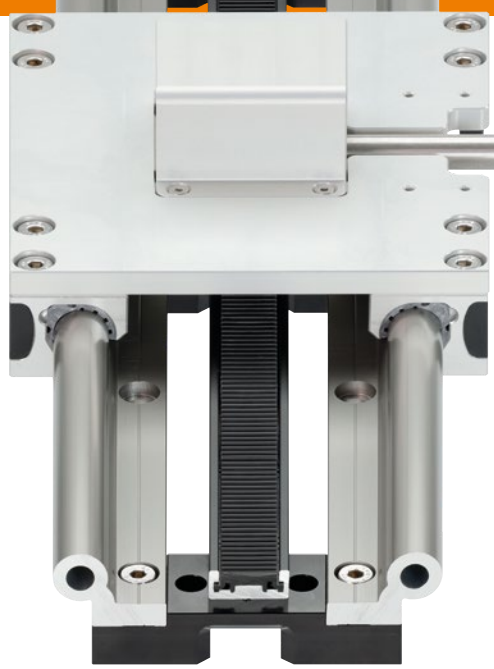


### ▼ Cost down

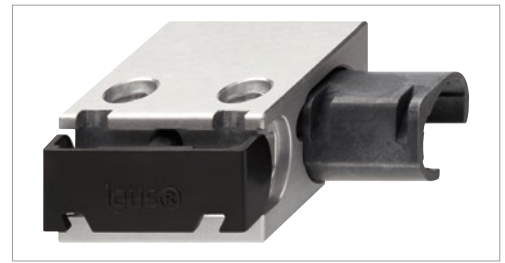
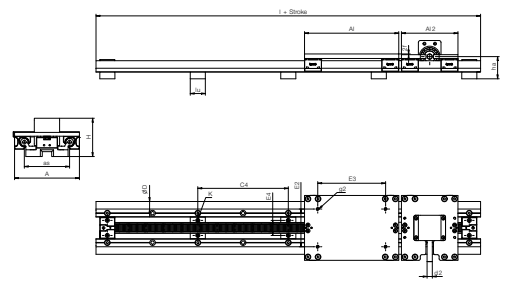
- Suitable for drylin® W standard rail WS-20
- Linear carriage with exchange bearing for changing directly on the rail
- Available ready for installation with motor and control system
- Efficient use of the carrier linear guide

### ● Sustainability

- 100% lubrication-free through the use of igus® high-performance polymers in the bearing points
- Maintenance-free due to self-lubricating igus® high-performance polymers
- igus® has been an investor in Mura Technology from the very beginning, and is advancing chemical recycling. From plastic waste to crude oil in 20 minutes: [igus.eu/hydroprs](http://igus.eu/hydroprs)



The design consists of a load carriage and a drive carriage



Liners can be easily replaced on the rail

Part No.	Max. stroke length	Weight	Transmission	Tooth profile	Gear rack material
	[mm]	[kg]	[mm/U]		
EGW-20120	10,000	7.8	157	Module 1	iglidur® RN202

Part No.	A	AI	H	E2	E3	E4	C4	f	g2
EGW-20120	172	250	102	100	180	40	240	2	M8

Part No.	d2	l	D	K	as	lu	ha	AI2
	h7			for DIN 912 - M6				
EGW-20120	14	417	20	M8	120	40	59	150