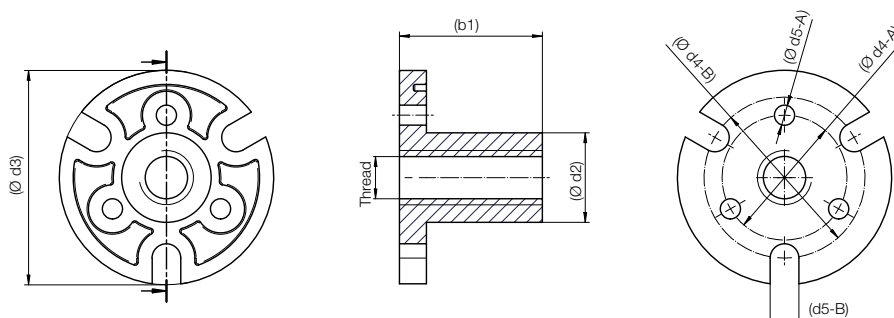
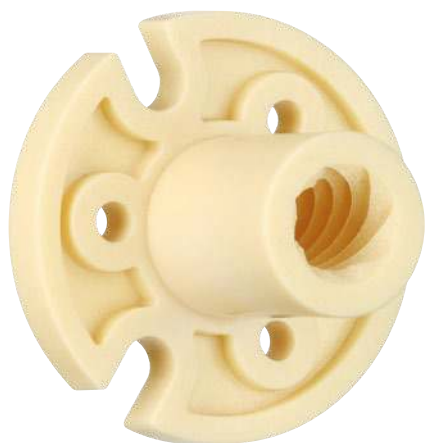


## dryspin® lead screw technology

## New dryspin® lead screw nut geometry



## Saving through universal exchange

The lead screw nut made of iglidur® JPF is characterised by its versatile fixing options on the flange. Injection-moulded, ensuring high precision and load capacity. For more specific applications or technical details, please visit our website or contact our experts. for quick quotations.

- Quiet due to thread geometry and longer service life due to the dryspin® asymmetrical thread geometry
- Low replacement costs due to identical connection dimensions - no redesign necessary
- Ongoing test program in the in-house test laboratory [igus.eu/dryspin-testreports](https://igus.eu/dryspin-testreports)
- Lubrication-free operation, PTFE-free and PFAS-free

## Product range

Blank dimensions	d1 [mm]	d2 [mm]	d3 [mm]	d4-A [mm]	d4-B [mm]	d5-A [mm]	d5-B [mm]	b1 [mm]	b2 [mm]	Max. static axial load* [N]
Thread Ø6.35	6.35	10.2	25.4	19.05	19.05	3.6	4.4	20	4.8	250
Thread Ø8	8	15.5	38.1	22.2	28.6	3.5	5.1	25.4	4.8	350

\* Reduced max. axial load due to nut geometry

Thread	Thread type	Efficiency [n]	Part No.
--------	-------------	-------------------	----------

## Blank dimensions thread Ø6.35

DST threads are thread profiles optimised for plastic lead screw nuts with particularly smooth running and a long service life

DS6.35x1	DST thread	16-33	DST-JPFFRM-UF-01-DS6.35x1
DS6.35x2.54	DST thread	33-55	DST-JPFFRM-UF-01-DS6.35x2.54
DS6.35x5.08	DST thread	47-70	DST-JPFFRM-UF-01-DS6.35x5.08
DS6.35x6.35	DST thread	52-74	DST-JPFFRM-UF-01-DS6.35x6.35
DS6.35x12.7	DST thread	60-81	DST-JPFFRM-UF-01-DS6.35x12.7
DS6.35x25.4	DST thread	57-81	DST-JPFFRM-UF-01-DS6.35x25.4

## ACME lead screw nuts according to ANSI / ASME B1.5-1977

1/4-16	ACME thread	24-44	JPFFRI-UF-01-1/4-16
1/4-20	ACME thread	20-39	JPFFRI-UF-01-1/4-20

## Blank dimensions thread Ø8

DS8x2	DST thread	24-44	DST-JPFFRM-UF-01-DS8x2
DS8x8	DST thread	52-74	DST-JPFFRM-UF-01-DS8x8
DS8x10	DST thread	55-77	DST-JPFFRM-UF-01-DS8x10
DS8x15	DST thread	60-81	DST-JPFFRM-UF-01-DS8x15
DS8x24	DST thread	60-82	DST-JPFFRM-UF-01-DS8x24
DS8x40	DST thread	52-79	DST-JPFFRM-UF-01-DS8x40



Universal connecting dimensions. Other dimensions for thread diameters between 6 and 25 on request.