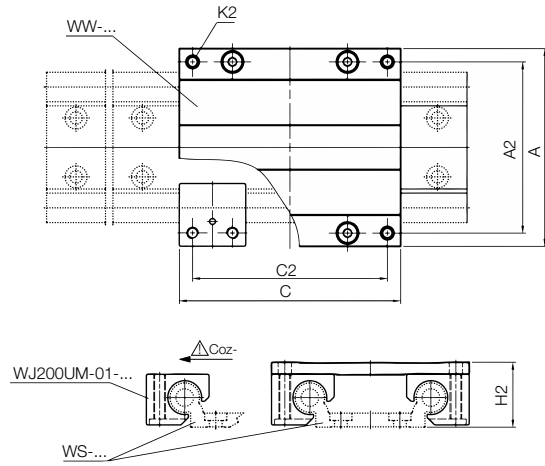


drylin® W linear carriage

drylin® W linear system



Full product range

Users have the choice between ready-to-install linear systems and variable individual components.

- Ready-to-install linear carriages in three lengths
- 20% narrower than previous installation size (06-30)
- Tested: static load capacity linear system Coy 1,680N
- 100% lubrication-free due to „sliding instead of rolling“

Product range

Part No.	Weight	A	C	A2	C2	K2	H2	Static load capacity				
								Coy	Coz	Mox	Moy	Moz
	[kg]	[mm]	[mm]	[mm]	[mm]		[mm]	[N]	[N]	[Nm]	[Nm]	[Nm]
WW-06-20-06	0.10	44	60	35	51	M4	18	1,680	840	16	34	34
WW-06-20-08	0.11	44	80	35	71	M4	18	1,680	840	16	51	51
WW-06-20-10	0.12	44	100	35	91	M4	18	1,680	840	16	68	68