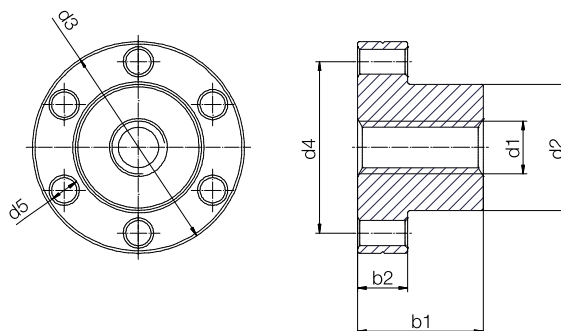


dryspin® lead screw technology

dryspin® flange lead screw nut



Lead screw nuts made from bar stock

The maximum tightening torque for the flange lead screw nut fastening screws is 2.5Nm. We recommend that fastening screws be secured with a third medium (such as liquid thread-locking glue). Metallic ferrules should be used for even higher tightening torques.

- Up to 50% lower cost than metallic lead screw nuts
- Up to 25% less wear compared to POM+PTFE (dimensions 10X3) igus.eu/dryspin-testreports
- Online calculation tool for service life: igus.eu/dge

Product range

| Thread | Direction of rotation | d1 | d2 | d3 | d4 | d5 | b1 | b2 | Effective support surface | Max. static load iglidur® | | | | Part No. |
|---------|-----------------------|------|------|------|------|------|------|------|---------------------------|---------------------------|-------|-------|-------|----------------------|
| | | [mm] | [mm] | [mm] | [mm] | [mm] | [mm] | [mm] | | J | J350 | R | A180 | |
| | | | | | | | | | [mm²] | [N] | [N] | [N] | [N] | |
| DS32x32 | RH | 32 | 45 | 70 | 58 | 7 | 46 | 16 | 1,776 | 4,441 | 4,441 | 3,553 | 4,441 | DST-□FRM-4546DS32X32 |

□ = choice of iglidur® materials

| Thread | igidur® J | | igidur® A180 | | igidur® J350 | | igidur® R | |
|---------|------------|-------------------------|--------------|-------------------------|--------------|-------------------------|------------|-------------------------|
| | Efficiency | Coefficient of friction | Efficiency | Coefficient of friction | Efficiency | Coefficient of friction | Efficiency | Coefficient of friction |
| | η | μ | η | μ | η | μ | η | μ |
| DS32x32 | 52-74 | 0.1-0.25 | 52-65 | 0.15-0.25 | 52-62 | 0.17-0.25 | 47-58 | 0.2-0.3 |